

Harvest the Sunshine

JA SOLAR

595W



JAM72D40 MB n-type Double Glass Bifacial Modules

Premium Cells

n-
Bycium+
16BB

26%



MBB Half-Cell
Technology

Cell Conversion
Efficiency

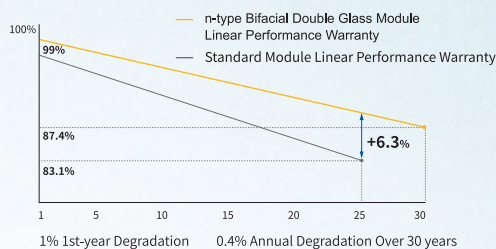
Premium Modules

Higher power
generation better LCOE

n-type with very
Lower LID

Better Temperature
Coefficient

Better low irradiance
response

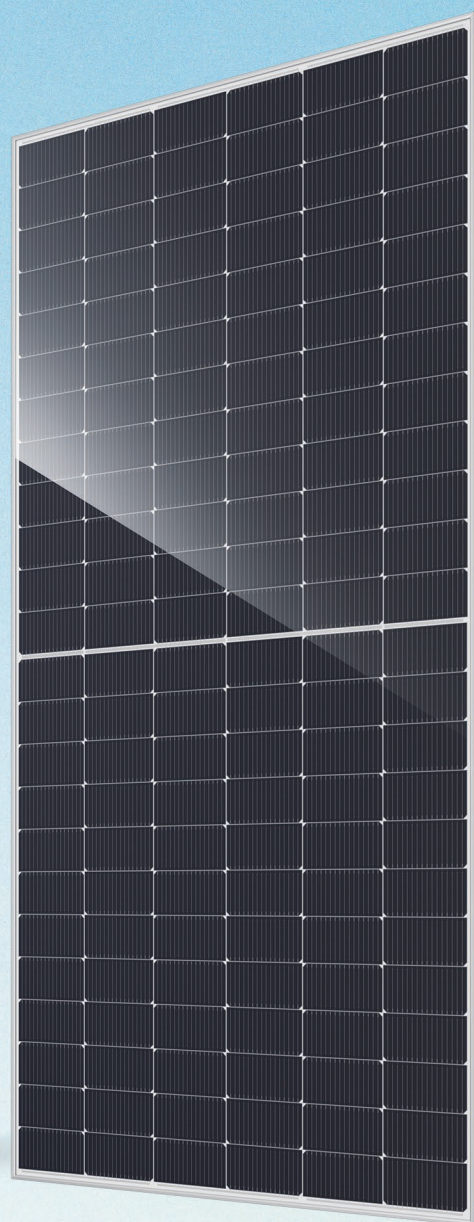
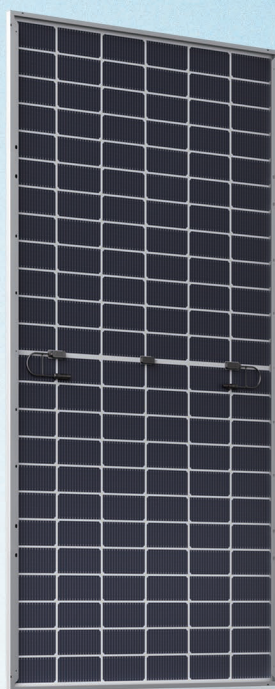


12-year product
warranty

30-year linear power
output warranty

Comprehensive Certificates

- IEC 61215, IEC 61730, UL 61215, UL 61730
- ISO 9001: 2015 Quality management systems
- ISO 14001: 2015 Environmental management systems
- ISO 45001: 2018 Occupational health and safety management systems
- IEC 62941: 2019 Terrestrial photovoltaic (PV) modules - Quality system for PV module manufacturing



DEEP BLUE 4.0

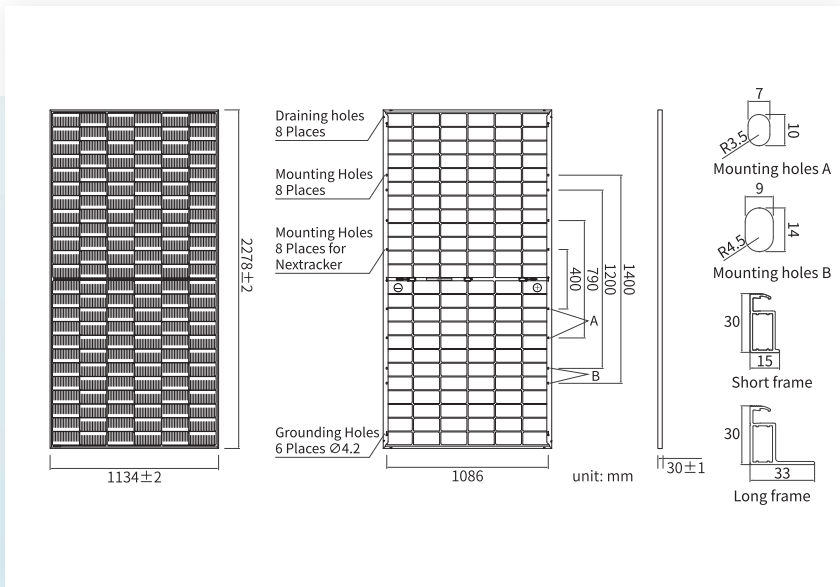
AUTHORIZED DISTRIBUTOR:

emiter.net

PORCELANOWA 27
40-241 KATOWICE

emiter@emiter.net.pl
+48 32 730 34 00

www.emiter.net.pl



MECHANICAL PARAMETERS

| | |
|------------------------------------|---|
| Cell | Mono |
| Weight | 31.8kg |
| Dimensions | 2278±2mm × 1134±2mm × 30±1mm |
| Cable Cross Section Size | 4mm ² (IEC), 12 AWG(UL) |
| No. of cells | 144(6×24) |
| Junction Box | IP68, 3diodes |
| Connector | QC 4.10-351/ MC4-EVO2A |
| Cable Length (Including Connector) | Portrait: 300mm(+)/400mm(-) Landscape: 1300mm(+)/1300mm(-) |
| Front Glass/Back Glass | 2.0mm/2.0mm |
| Packaging Configuration | 36pcs/Pallet, 720pcs/40HQ Container |

Remark: customized frame color and cable length available upon request

ELECTRICAL PARAMETERS AT STC

| TYPE | JAM72D40 570/MB | JAM72D40 575/MB | JAM72D40 580/MB | JAM72D40 585/MB | JAM72D40 590/MB | JAM72D40 595/MB |
|--|---|-----------------|-----------------|-----------------|-----------------|-----------------|
| Rated Maximum Power(Pmax) [W] | 570 | 575 | 580 | 585 | 590 | 595 |
| Open Circuit Voltage (Voc) [V] | 51.52 | 51.73 | 51.95 | 52.16 | 52.37 | 52.58 |
| Maximum Power Voltage(Vmp) [V] | 43.62 | 43.82 | 44.02 | 44.22 | 44.43 | 44.64 |
| Short Circuit Current(Isc) [A] | 13.74 | 13.79 | 13.84 | 13.89 | 13.94 | 13.99 |
| Maximum Power Current(Imp) [A] | 13.07 | 13.12 | 13.17 | 13.23 | 13.28 | 13.33 |
| Module Efficiency [%] | 21.1 | 22.3 | 22.5 | 22.6 | 22.8 | 23.0 |
| Power Tolerance | 0~+3% | | | | | |
| Temperature Coefficient of Isc(α _{Isc}) | +0.045%/°C | | | | | |
| Temperature Coefficient of Voc (β _{Voc}) | -0.250%/°C | | | | | |
| Temperature Coefficient of Pmax(γ _{Pmp}) | -0.290%/°C | | | | | |
| STC | Irradiance 1000W/m ² , cell temperature 25°C, AM1.5G | | | | | |

Remark: Electrical data in this catalog do not refer to a single module and they are not part of the offer. They only serve for comparison among different module types.

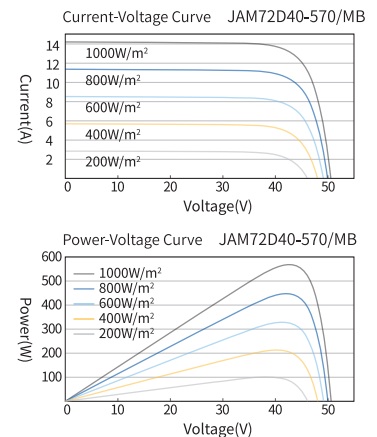
ELECTRICAL CHARACTERISTICS WITH 10% SOLAR IRRADIATION RATIO

| TYPE | JAM72D40 570/MB | JAM72D40 575/MB | JAM72D40 580/MB | JAM72D40 585/MB | JAM72D40 590/MB | JAM72D40 595/MB |
|--------------------------------|-----------------|-----------------|-----------------|-----------------|-----------------|-----------------|
| Rated Max Power(Pmax) [W] | 616 | 621 | 626 | 632 | 637 | 643 |
| Open Circuit Voltage(Voc) [V] | 51.52 | 51.73 | 51.95 | 52.16 | 52.37 | 52.58 |
| Max Power Voltage(Vmp) [V] | 43.62 | 43.82 | 44.02 | 44.22 | 44.43 | 44.64 |
| Short Circuit Current(Isc) [A] | 14.84 | 14.89 | 14.95 | 15.00 | 15.06 | 15.11 |
| Max Power Current(Imp) [A] | 14.11 | 14.17 | 14.23 | 14.29 | 14.34 | 14.40 |
| Irradiation Ratio (rear/front) | 10% | | | | | |

* For Nexttracker installations, maximum static load please take compatibility approve letter between JA Solar and Nexttracker for reference.

** Bifaciality=Pmax, rear/Rated Pmax, front

CHARACTERISTICS



OPERATING CONDITIONS

| | |
|-----------------------------|---------------------------------|
| Maximum System Voltage | 1500V DC |
| Operating Temperature | -40°C~+85°C |
| Maximum Series Fuse Rating | 30A |
| Maximum Static Load, Front* | 5400Pa(112 lb/ft ²) |
| Maximum Static Load, Back* | 2400Pa(50 lb/ft ²) |
| NOCT | 45±2°C |
| Bifaciality** | 80%±10% |
| Safety Class | Class II |
| Fire Performance | UL Type 29/Class C |