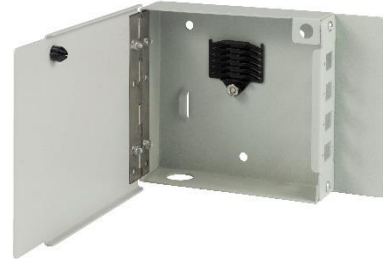


### 4xSC simplex wall-mounted metal optical distribution box

#### Product description and characteristics:

The wall-mounted optical distribution box is designed for surface mounting. It has 4 holes, made for mounting SC Simplex adapters and it is equipped with a holder for securing the splices. A front plate is included with the optical distribution box. Its compact dimensions, make this optical distribution box ideal for locations where the space is limited.



#### Markings:

4xSC simplex wall-mounted metal optical distribution box; code: **EM/FTTHMB4SCS**

**Packaging:** cardboard box

**Contents:** optical distribution box, splice holders inside the enclosure

#### Technical specifications:

Colour: grey

Material: metal

Gland hole: PG 135

Dimensions (L x W x H): 142x107x30mm

Weight: 400g

We have made every effort to ensure that the information presented is accurate and complete. However, we are not responsible for the accuracy and completeness of the data and, in particular, we cannot guarantee that this specification does not contain errors or mistakes. The information contained in this specification may be changed at any time without notice.