

## EmiterNet multi-mode fibre optic adapters

### Description and Technical Characteristics of the Products:

EmiterNet series multi-mode fibre optic adapters (couplers) make it possible to connect different types of fibre optic cables together. SC and LC adapters are available, in both simplex version, and duplex versions. The flangeless design of LC adapters installed in small boxes and subscriber sockets as well as optical distribution boxes with limited amount of space. The adapters are designed and manufactured in accordance with the requirements of IEC and Telcordia performance standards.

The adapters are used to build fibre optic networks (FTTH, CATV), mainly in optical distribution boxes, telecom boxes and subscriber sockets.

#### Features:

- easy to clip in,
- low insertion and reflection losses,
- high precision workmanship,

#### Markings:

SC MM simplex adapter; Code: **EM/ADSCUPCMMSX**

SC MM duplex adapter; Code: **EM/ADSCUPCMMDX**

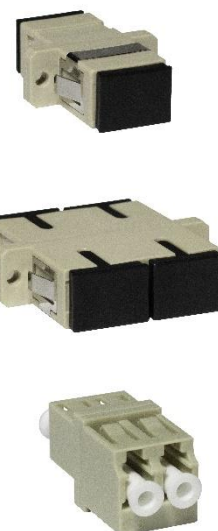
LC MM duplex adapter (without flange); Code: **EM/ADLCPCMMDXSW**

#### Compatible products:

Fibre optic panel front plates

Distribution plates of wall-mounted fibre optic cabinets

Non-equipped subscriber sockets



**Technical parameters:**

<b>Fibre optic adapters: SC, LC</b>	
Centring ferrule material	ceramic ferrule
Maximum loss	≤0.2 dB
Push force	LC: 40N SC: 70N
Durability [cycles]	1000
Colour	multi-mode UPC: beige
Temperature	from -40 to +75°C
Enclosure material	Plastic
Colours	beige
Latch	Stainless steel
Dust cap	LC: Clear or white plastic SC: black plastic

We have made every effort to ensure that the information presented is accurate and complete. However, we are not responsible for the accuracy and completeness of the data and, in particular, we cannot guarantee that this specification does not contain errors or mistakes. The information contained in this specification may be changed at any time without notice.