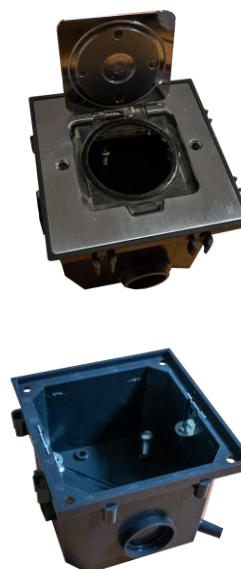


“2M floor box mini” IP44 - floor box for mounting power sockets of 45mm (2M) standard in hard floors (concrete); code: EM/FLB-SDF1ZNC**Description and Technical Characteristics of the Product:**

Floor box with frame for the installation of fixtures in the 45x45 standard (electrical, ICT sockets, etc.). The box is designed for use in hard floors in a drilled hole or in poured concrete. The capacity of the box is 2 modules 22.5x45mm (1 module 45x45mm). Top cover made of metal and opening 180 degrees. It has an increased ingress protection class IP44. The box has knockouts for punching holes for cable entry. The box to be placed in cast concrete is equipped with screws for levelling and embossments that allow the boxes to be combined into sets of modules. The floor box makes it possible to prepare an aesthetically pleasing telecom subscriber point along with the electrical network.

**Note:**

The IP44 ingress protection class applies to the box with the closed cover and with the mounting box properly installed,

Markings:

“2M floor box mini” IP44 - floor box for mounting power sockets of 45mm (2M) standard in hard floors (concrete); code: **EM/FLB-SDF1ZNC**

Products compatible with the box:**sockets:**

Grounded 230V socket screw-less single std 45x45, with lock and release, red; code: E/BGNBZ

Grounded 230V socket screw-less single std 45x45, white; E/BGN

Modular socket 230V grounded single std 45x45, white; E/GM

Modular socket 230V grounded single std 45x45, with lock and release, red; E/GMBZ

adapters:

45x45 1xRJ45, RJ12 adapter white; code: FU/FA-644-9MP

45x45 1xRJ45,12, adapter white; code: FU/FA-644-8MP

Single-module cap 22.5x45mm; code: DC/FA-644-3MP*

Two-module straight 45x45mm adapter for 1xRJ45 or 1xRJ12, code: DC/FA-644-2SP*

Single-module straight 22.5x45mm adapter for 1xRJ45 or 1xRJ12, code: DC/FA-644-1SP*

UTP RJ 45 socket Cat. 5e with adapter, 1-module, white, low; code: DCN/TS-868K-8-C5E*

UTP RJ 45 socket Cat. 6 with adapter, 1-module, white, low; code: DCN/TS-868K-8-C6*

***In order to install the product, it may be necessary to remove the colour frame included with the adapter/socket.**

Note:

If the sockets in the adapters extend beyond the face of the adapter and angle adapters, they are incompatible. Due to the different depth of the sockets and the different ways of routing and connecting the cables, some sockets in the adapters may not be compatible. Due to the possibility of different component combinations, it is recommended to check this or contact the technical department before installation.

Installation method:

in concrete: punch holes in the box using a drift punch with a hammer to insert the wires, drill a hole in the floor and embed the box inside, if necessary, level using the screws provided with the box; insert the wires through a box placed in the concrete, bolt the box with frame with screws to the box placed in concrete using the existing holes in the cover.

in poured concrete: punch holes in the box using a drift punch with a hammer to insert the wires, place the box in the required place on the floor (if necessary, drill a deeper hole), fixing it to the floor with screws, if necessary, level using the screws provided with the box; insert the wires into the box placed in concrete; after pouring concrete, bolt the box with frame with screws to the box placed in concrete using the existing holes in the cover

Technical parameters:

Mechanical:

Frame:

Colour: silver

Finish: metal

Dimensions (L x W): 87x87mm

Weight: 0.15kg

Mounting box:

Colour: grey

Finish: plastic

Dimensions (L x W x D): 91x91x67mm

Weight: 0.1kg

Additional technical parameters:

Temperature range during installation: -5°C to +60°C,

Maximum temperature during construction work: +60°C

Note:

The product is designed for installation in places, in which its functionality and application will be used. For this reason, do not design the installation of a floor box in walkways and areas, in which it will be a hindrance or obstacle to people moving around.

Depending on the type and number of cables and connection wires plugged into the box-mounted sockets, the cover may or may not fully close. Appropriate functionality, resulting from the product features, should be envisioned by the designer at the design stage.

Standards:

PN-EN 60670-1, PN-EN 60670-23

We have made every effort to ensure that the information presented is accurate and complete. However, we are not responsible for the accuracy and completeness of the data and, in particular, we cannot guarantee that this specification does not contain errors or mistakes. The information contained in this specification may be changed at any time without notice.