

6-module floor box for mounting fixtures 22.5x45 (45x45) IP66

Markings:

6-module floor box for mounting fixtures 22.5x45 (45x45) IP66;
code: EM/FLB-SOB3SF

Description and Technical Characteristics of the Product:

Floor box integrated with a frame for the installation of fixtures in the 45x45 standard (electrical, ICT and other sockets). Waterproof, ingress protection class IP66. The box makes it possible to prepare an aesthetically pleasing subscriber ICT connection point along with the electrical network.

Top cover made of aluminium alloy similar to brushed steel. The box can be used in both poured floors, drilled holes and technical floors. The box has a capacity of 6 modules in total, divided into 2x2 modules plus 2x1 modules 22.5x45. The modules are mounted in a fixed frame.

It is equipped with 6 cable glands that allow wires to be routed into the box. The cover has a lock (latch) allowing it to stay in the open position when the cables are connected, thus protecting the cables against damage.

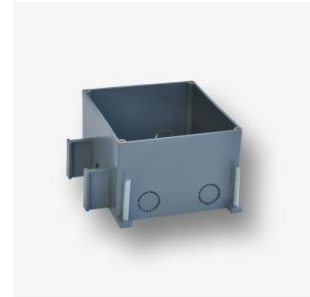
It comes with an additional box to be placed in cast concrete, equipped with screws for levelling and embossments that allow the boxes to be combined into sets of modules. The box has side knockouts for cable entry.

Installation method:

in the technical floor: drill a hole in the floor; insert the wires using the glands provided with the box with frame; bolt the box with frame with screws to the floor using the existing holes in the cover.

in concrete: cut holes for cable entry in the box, drill a hole in the floor and embed the box inside, if necessary, level using the screws provided with the box; insert the wires through a box placed in the concrete, and then through the glands to the box with frame; bolt the box with frame with screws to the box placed in concrete using the existing holes in the cover.

in poured concrete: cut holes for cable entry in the box, place the box in the required place on the floor (if necessary, drill a deeper hole), fixing it to the floor with screws, if necessary, level using the screws provided with the box; insert the wires into the box placed in concrete; after pouring concrete, insert the wires through the glands into the box with frame; bolt the box with frame with screws to the box placed in concrete using the existing holes in the cover



Marking:

“3M floor box” IP66 - floor box for mounting sockets of 22.5x45mm standard (45x45mm); tilting, mediaport, capacity 6M (2x2M+2x1M), material: aluminium/plastic, dimensions 145X175x90mm, with concrete-mounted mounting box, code: EM/FLB-SOB3SF

Products compatible with the box:

installation in 45x45 or 22.5x45 holes, respectively:

E/GM	Modular socket 230V grounded single std 45x45, white
E/GMBZ	Modular socket 230V grounded single std 45x45, with lock and release, red
DCN/TS-868K-8-C5E	UTP RJ 45 socket Cat. 5e with adapter, 1-module, white, low
DCN/TS-868K-8-C6	UTP RJ 45 socket Cat. 6 with adapter, 1-module, white, low
FU/FA-2420-VGA	VGA 22.5x45mm socket
FU/FA-2420-3RCA-AV	AUDIO VIDEO 22.5x45mm socket
FU/FA-2420-BNC	BNC (F/F) 22.5x45mm socket
FU/FA-2420-RF	F (F/F) 22.5x45mm socket
FU/FA-2420-SP	SP (speaker) 22.5x45mm socket
FU/FA-2420-PHJ	3.5mm 22.5x45mm jack socket
DC/FA-644-1SP	Single-module straight 22.5x45mm adapter for 1xRJ45 or 1xRJ 12
DC/FA-644-2SP	Two-module straight 45x45mm adapter for 1xRJ45 or 1xRJ 12
DC/FA-644-3MP	Single-module cap 22.5x45mm
DC/SIP-30AIN2	Two-module angle 45x45mm adapter for 2xRJ45 or 2xRJ12 for Cat. 6A tool-free
FU/FA-644-9MP	45x45 1xRJ45,12 adapter white
FU/FA-644-8MP	45x45 2xRJ45,12, adapter white
EM/RW-DATA-1	Two-module single 1xRJ45 angle adapter
FU/FA-644-5MP	45x45 adapter to 1 SC duplex adapter (equipped)

installation of keystone modules (with a type of adapter compatible with the socket):

DC/FA-682MK-8-C5E	UTP RJ 45 socket Cat. 5e keystone, white
DC/FA-682MKSF-8-C5E	STP RJ 45 socket, Cat. 5e keystone, white
FU/FA-2630AK-8-C6	UTP RJ 45 socket Cat. 6 keystone, white
DC/FA-356A-6	RJ12 keystone socket Cat.3 white
DCN/FA-682MK-8-C5E	UTP RJ 45 socket, Cat. 5e keystone, blue
DCN/FA-S682MK-8-C5E	RJ45 UTP socket, Cat. 5e keystone blue (tool-free) (only in angle adapter)
DCN/FA-682MKSF-8-C5E	STP RJ 45 socket, Cat. 5e keystone, blue
DCN/FA-1090-8-C6	UTP RJ 45 socket Cat. 6 keystone, blue
DCN/FA-1090SF-8-C6	STP RJ 45 socket Cat. 6 keystone, blue
EM/KEY-F/F	F-type female keystone socket, white
EM/KEY-RCA/RCA	RCA-type female keystone socket white
EM/KEY-HDMI/HDMI-DC	HDMI type female keystone socket, white (only with adapter code no. EM/ADAPT-HDMI-90, collision or limited space for other sockets)

Technical parameters:

Mechanical:

Concrete-mounted mounting box:

finish: ABS plastic

colour - grey

dimensions (W x H x D): 150x160x80mm

Weight 0.2kg

spacing between boxes joined together: 143mm

Box with frame:

finish: Brushed stainless steel cover, ABS plastic

colour - natural (grey/silver)

dimensions (W x H x D): 155x173x88mm

Weight 0.7 kg

Hole dimensions:

when installing in the technical floor (box with frame) (W x H): 115x125mm

when installing in concrete (drilled hole): according to the dimensions of the box

Ingress protection class:

for boxes with closed cover and with proper installation: IP66

for box with open cover: IP20

Note:

The IP66 ingress protection class applies to the box with the closed cover and with the box properly installed, with properly inserted wires through glands; when the box is open, the ingress protection class is IP20.

Additional notes:

when designing solutions, it is important to take into account different solutions and dimensions of the plugs, and thus, the different requirements in terms of the amount of space to connect them to the front and back of the sockets, and ensure that the sockets planned to be installed together with the connecting cables, depending on how they are connected, fit in a box (individual sockets as well as all of them with individual configuration of all the sockets installed); Due to the different depth of the sockets and the different ways of routing and connecting the cables, some sockets in the adapters may not be compatible; Due to the possibility of various combinations, it is recommended to check this or contact the technical department before installation;

In order to stick to the permissible cable bending radii, it is recommended to install STP (shielded) ICT sockets and Category 6/6A sockets, as well as other sockets requiring a lot of space for connection, in an angle adapter; With a large number of sockets, it may be necessary to make additional cable glands, in which case the factory ingress protection class IP66 does not apply.

We have made every effort to ensure that the information presented is accurate and complete. However, we are not responsible for the accuracy and completeness of the data and, in particular, we cannot guarantee that this specification does not contain errors or mistakes. The information contained in this specification may be changed at any time without notice.