

**Patchcord duplex SM G.652D 9/125 EM/21B-XXXXXXXXX**

**Description and Technical Characteristics of the Product:**

Mono-mode duplex optical patchcords are manufactured based on G.652D duplex patchcord cable.

The standard length of patchcords is 1 or 2m.

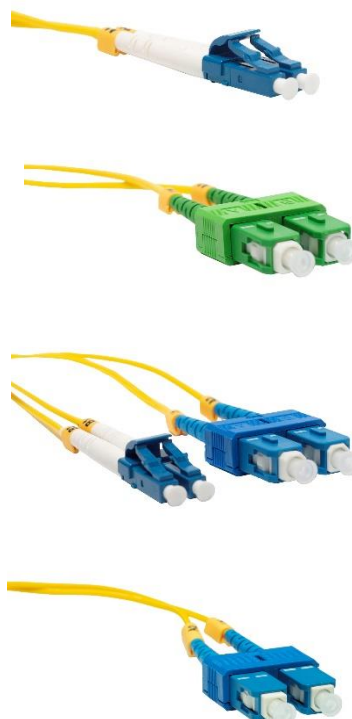
Each connector leaving the production line is tested, and the performance of the cable loss measurement guarantees the high quality of the product. Each patchcord is accompanied by a measurement report.

Fibre optic patch cables can be terminated with SC-type, or LC-type connectors (in various combinations on both sides).

Application: FTTH, PON, CATV networks.

Features:

- low insertion and reflection losses
- high quality and precision workmanship



**Markings (in bold on the most popular variants, 1 and 2 meters long):**

- Patchcord duplex SM G.652D SC/UPC-SC/UPC 9/125 1m, code: EM/21B-SC/UPC-SC/UPC-1M
- Patchcord duplex SM G.652D SC/UPC-SC/UPC 9/125 2m, code: EM/21B-SC/UPC-SC/UPC-2M
- Patchcord duplex SM G.652D SC/APC-SC/APC 9/125 1m, code: EM/21B-SC/APC-SC/APC-1M
- Patchcord duplex SM G.652D SC/APC-SC/APC 9/125 2m, code: EM/21B-SC/APC-SC/APC-2M
- Patchcord duplex SM G.652D SC/UPC-LC/UPC 9/125 1m, code: EM/21B-SC/UPC-LC/UPC-1M
- Patchcord duplex SM G.652D SC/UPC-LC/UPC 9/125 2m, code: EM/21B-SC/UPC-LC/UPC-2M
- Patchcord duplex SM G.652D LC/UPC-LC/UPC 9/125 1m, code: EM/21B-LC/UPC-LC/UPC-1M
- Patchcord duplex SM G.652D LC/UPC-LC/UPC 9/125 2m, code: EM/21B-LC/UPC-LC/UPC-2M

**Packaging:** PE bag

**Contents:** patchcord, test

**Connector type:** depending on the model — SC/UPC, SC/APC, LC/APC

**Length:** 1m or 2m, depending on the model

**Number of fibres:** two (duplex)

**Connection method:** A-B

No.	Parameter	Unit	Value
1	Insertion loss	dB	$SM \leq 0.25\text{dB}$
2	Reflection loss	dB	UPC $APC \geq 60\text{dB}$
3	Durability		min. 1000 cycles
4	Repeatability	dB	Change in insertion loss < 0.2, change in reflection loss < 5
5	Operating temperature	°C	-10 to +80
6	Cable bending radius	mm	15 mm
7	Ferrule material		Ceramic zirconia (Grade A)
8	Cable colour		yellow
9	Adapter colour		Depending on the model: blue, green

We have made every effort to ensure that the information presented is accurate and complete. However, we are not responsible for the accuracy and completeness of the data and, in particular, we cannot guarantee that this specification does not contain errors or mistakes. The information contained in this specification may be changed at any time without notice.