

## Siren Alarm

# User Manual

### Thank you for your support!

Please read the user manual carefully before operating.  
Please keep the user manual for future reference.



## Associations

[Association Command Class Version 2]

This Siren supports 3 groups; each group supports max 5 associated nodes.

This siren can identify some Z-Wave notification sensors such as Motion Sensor, Door/Window Sensor, Water Leakage Sensor, Smoke Sensor and so on. If these sensors associate this siren to their lifeline group or other group that supports NOTIFICATION\_REPORT, the siren will play different music when sensor is triggered.

GROUP 1 is lifeline service that assigned to Siren status. It enables the Siren to send reports and readings to Z-Wave Controller or Z-Wave Gateway whenever the sensor is triggered. This Group Support: SWITCH\_BINARY\_REPORT, NOTIFICATION\_REPORT, BATTERY\_REPORT, DEVICE\_RESET\_LOCALLY\_NOTIFICATION

GROUP 2 allows for Send Binary Switch Report to associated devices in this group. This Group Support: SWITCH\_BINARY\_REPORT

GROUP 3 allows for Send Notification to associated devices in this group. This Group Support: NOTIFICATION\_REPORT

NOTE: Association allows for direct communication between Z-Wave network devices. Main controller does not take part in such communication.

## Product Introduction

Siren alarm is an intelligent device that can be controlled remotely by the radio frequency. Siren alarm sends messages via Z-Wave network to the Z-Wave main controller. In the Z-Wave network communications, Siren alarm can be connected to any Z-Wave main controller; Different countries or areas, the radio frequency of the Z-Wave network is different. In the communication between the Siren alarm and Z-Wave main controller, the siren alarm can both send and receive messages. When press the code button of siren alarm, it will send message to the Z-Wave main controller, the Z-Wave main controller can display the on/off status of the siren alarm; when the siren alarm receives messages from the Z-Wave main controller, the siren alarm will be triggered. The siren alarm is battery powered, small and easily install. When siren alarm is working, LED light will flash, and there will be alarm sound at the same time. The sound is not lower than 90 decibels.

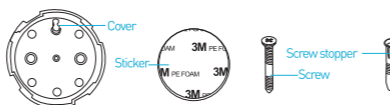
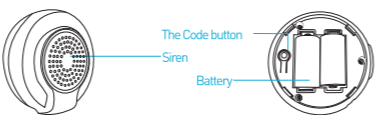
## Technical Parameters

- Power supply: CR123A x2
- Stand-by time: 1 year
- Radio Frequency: 868.4MHz EU; 908.4MHz US
- Compatible with 300 series and 500 series
- Easy installation on wall or any surface
- 10 sound can be selected
- Range: up to 80m outdoor; up to 40m indoor
- Power Consumption: 2W
- Max Current: 35mA (In Radio Transmitter Mode) 500mA (In Siren On and Max Volume Mode)
- Radio Protocol: Z-Wave
- Sound intensity: >90 dB
- Operation temperature: 0~40°C
- Storage temperature: 0~60°C
- Dimension: (D x W x H): 70mm x 68mm x 31mm

## Technical Information

- When the siren alarm triggered, it will make alarm sound and LED light flash at the same time.
- When the other sensor is triggered, the siren alarm can associate with the sensor through the Z-Wave network.
- Siren alarm can be controlled remotely via mobile phone App.
- Compatible with any Z-Wave controller.

## Product Configuration



## Items List

- |                        |      |
|------------------------|------|
| • Siren alarm          | 1pc  |
| • Battery              | 2pcs |
| • Screw                | 3pcs |
| • Screw stopper        | 3pcs |
| • Double-side adhesive | 1pc  |
| • User manual          | 1pc  |

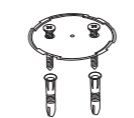
## Installation Steps

### Hardware Installation

- Cover installation
- Battery installation

### Cover installation

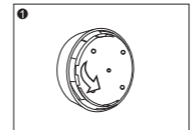
Option One  
Fix the siren alarm with screws



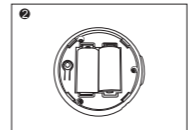
Option Two  
Fix the siren alarm with sticker



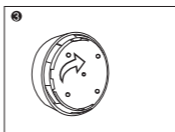
### Battery Installation



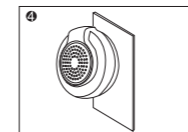
Open the siren alarm



Install the battery



Close the siren alarm



Installation example

## Tips

1. When install the siren alarm, please avoid the noisy places.
2. Please install somewhere easy to find.
3. Do not install in a ventilated position to affect the effect of the siren alarm.
4. Do not install at a wet place to prevent the siren alarm from damaging.
5. When the siren alarms, it would sound and the led would flash red lights.
6. Association allows for direct communication between Z-Wave network devices. Main controller does not take part in such communication. Using this mechanism, siren alarm may communicate with other devices even when the main controller is damaged.

## Battery Usage Tips

Battery life of the siren alarm is approximately 1 years at factory default settings. The current battery level is displayed in the Z-Wave main controller. Red battery icon means the battery needs replaced.

Note: Siren alarm is battery powered. Using batteries other than specified may result in explosion. Dispose of properly, please observe environmental protection rules.

## LED Color Indicator

LED Color	Led Display Status	Description
Red	Blink 5 Times (1s Interval)	Power on and Not Add in Z-Wave Network
	Blink 5 Times (500ms Interval)	Press Button tripled, Adding siren in a Z-Wave Network or Send Node Info.
	Blink 5 Times (300ms Interval)	Power on and Already Add in a Z-Wave Network
	Blink 1 Time	Press the Button Long Time, Reset the Plug to restore default settings
	Turn on with rotation	Alarm on

### Including Siren Alarm to Z-Wave Network

The siren alarm can be included to the Z-Wave network by pressing on the code button.

- 1) Disassemble the siren alarm and insert the battery into the siren alarm. Make sure the device is located within the direct range of the controller.
- 2) Set the controller into the learning mode (see main controller's operating manual).
- 3) Quickly, triple click the code button, LED light will flash red for 5 times.
- 4) Siren alarm will be detected and included in the Z-Wave network.
- 5) Wait for the main controller to configure the siren alarm.

## Command Classes

This Sensor supports Command Classes as Below:

\*COMMAND\_CLASS\_ZWAVEPLUS\_INFO (V2)  
\*COMMAND\_CLASS\_VERSION (V2)  
\*COMMAND\_CLASS\_MANUFACTURER\_SPECIFIC (V2)  
\*COMMAND\_CLASS\_DEVICE\_RESET\_LOCALLY (V1)  
\*COMMAND\_CLASS\_POWERLEVEL (V1)  
\*COMMAND\_CLASS\_BATTERY (V1)  
\*COMMAND\_CLASS\_ASSOCIATION (V2)  
\*COMMAND\_CLASS\_ASSOCIATION\_GRP\_INFO (V1)  
\*COMMAND\_CLASS\_WAKE\_UP (V2)  
\*COMMAND\_CLASS\_SWITCH\_BINARY (V1)  
\*COMMAND\_CLASS\_NOTIFICATION (V6)  
\*COMMAND\_CLASS\_CONFIGURATION (V1)  
\*COMMAND\_CLASS\_INDICATOR (V1)

## Guarantee

1. The Guarantee is provided by Shenzhen NEO Electronics Co., Ltd (hereinafter "Manufacturer")
2. The Manufacturer is responsible for equipment malfunction resulting from physical defects (manufacturing or material) for 12 months from the date of its purchasing.
3. During the Guarantee period, the Manufacturer shall repair or replace any defects, free of charge.
4. In special cases, when the device cannot be replaced with the device of the same type (e.g. the device is no longer available in the commercial offer), the Manufacturer may replace it with a different device which has similar technical parameters as the faulty one. Such activity shall be considered as fulfilling the obligations of the Manufacturer. The Manufacturer shall not refund money paid for the device.
5. The guarantee shall not cover:  
mechanical damages (cracks, fractures, cuts, abrasions, physical deformations caused by impact, falling or dropping the device or other object, improper use or not observing the operating manual); damages resulting from external causes, e.g.: flood, storm, fire, lightning, natural disasters, earthquakes, war, civil disturbance, force majeure, unforeseen accidents, theft, water damage, liquid leakage, battery spill, weather conditions, sunlight, sand, moisture, high or low temperature, air pollution  
damages caused by malfunctioning software, attack of a computer virus, or by failure to update the software as recommended by the Manufacturer;

All above is for reference only, please see the subject products.

Parameter Number	Size	Available Settings	Default
3	1	0-255	1

for ALARM MUSIC MODE defines by Param #1, #2 and #5. These settings for DOOR BELL MUSIC MODE defines by Param #3, #4 and #6.

If parameter set to '1', siren will select ALARM MUSIC MODE to play music;

If parameter set to '2', siren will select DOOR BELL MUSIC MODE to play music;

Parameter Number	Size	Available Settings	Default
7	1	1-2	1

### 8. Configure Alarm Led Enable

This parameter defines the default led enable status when siren is on for ALARM MUSIC MODE.

If parameter is set to '0', led will be disable.

If parameter is set '1', led will be enable. When siren is on, the led will blink.

Parameter Number	Size	Available Settings	Default
8	1	0, 1	1

### 9. Configure Door Bell Led Enable

This parameter defines the default led enable status when siren is on for DOOR BELL MUSIC MODE.

If parameter is set to '0', led will be disable.

If parameter is set to '1', led will be enable. When siren is on, the led will blink.

Parameter Number	Size	Available Settings	Default
9	1	0, 1	0

### Command Class Interact

#### Binary Switch Command Class

Siren can be turned on and off by COMMAND\_CLASS\_SWITCH\_BINARY Which music will be played by siren is decided by advance configuration parameter #5. When Siren stop play alarm music, it will send a SWITCH\_BINARY\_REPORT = 0x00 to controller.

Siren Alarm On:

Command Class: COMMAND\_CLASS\_SWITCH\_BINARY

Command: SWITCH\_BINARY\_SEND

Value: 0xFF

Siren Alarm Off:

Command Class: COMMAND\_CLASS\_SWITCH\_BINARY

Command: SWITCH\_BINARY\_SEND

Value: 0x00

### Basic Command Class

The Functions of BASIC\_SET = 0x00 And BASIC\_SET = 0xFF are same to Binary Switch Command Class.

### Indicator Command Class

The INDICATOR\_SET Value is indicated that which music will be played. For example: INDICATOR\_SET = 0x01, Siren will play the first music. See the Table As Below:

Command	Music Index in Memory	Playing Volume And Time
INDICATOR_SET = 0x01	1	Defined By Param #3, #4
INDICATOR_SET = 0x02	2	Defined By Param #3, #4
INDICATOR_SET = 0x03	3	Defined By Param #3, #4
INDICATOR_SET = 0x04	4	Defined By Param #3, #4
INDICATOR_SET = 0x05	5	Defined By Param #3, #4

INDICATOR_SET = 0x06	6	Defined By Param #3, #4
INDICATOR_SET = 0x07	7	Defined By Param #3, #4
INDICATOR_SET = 0x08	8	Defined By Param #3, #4
INDICATOR_SET = 0x09	9	Defined By Param #3, #4
INDICATOR_SET = 0x0A	10	Defined By Param #3, #4

Other INDICATOR\_SET values are invalid for this siren.

### Notification Command Class

If Siren receives a command from associated devices or controller to play any music, siren will send an active notification to controller. If Siren stops play music, it will send a no active notification to controller.

Siren Active Notification Report:

Command Class: COMMAND\_CLASS\_NOTIFICATION

Command: NOTIFICATION\_REPORT

Notification Type: NOTIFICATION\_TYPE\_SIREN

Event: NOTIFICATION\_EVENT\_SIREN\_ACTIVE

Siren No Active Notification Report:

Command Class: COMMAND\_CLASS\_NOTIFICATION

Command: NOTIFICATION\_REPORT

Notification Type: NOTIFICATION\_TYPE\_SIREN

Event: NOTIFICATION\_EVENT\_SIREN\_NO\_EVENT

### Battery Check Command

The users can also enquire the battery status of the siren by sending BATTERY\_GET command. Once the siren receives the command, it will return BATTERY\_REPORT command. The siren will send BATTERY\_LEVEL = 0xFF command to the Z-Wave Controller to inform that the siren is in dead battery status, otherwise BATTERY\_LEVEL value range is 0% to 100%.



www.szneo.com

4007-888-929

## SHENZHEN NEO ELECTRONICS CO., LTD

Address: 6TH Floor, Building No.2, Laobing Industrial Park, Tiezhai Road, Xixiang, BaoAn District, Shenzhen, China.  
Http: www.szneo.com  
Tel: +86 4007 888 929  
Fax: +86 755 2966 7746  
E-mail: support@szneo.com

