



**NOW WITH  
TOUCHSCREEN  
(Plus & Pro)**



# NavITeK NT

Copper and Fibre Network Troubleshooter

# NaviTEK NT

## Network Troubleshooter

The NaviTEK NT is a network tester for troubleshooting and maintenance of active and passive copper and fibre networks. Incorporating an improved graphical interface NaviTEK NT allows network technicians to pinpoint and solve network connectivity issues faster than ever before. Subsequently, tests can be saved as pdf reports and shared with colleagues and clients using the free TREND AnyWare™ app.



### Addressing the needs of today's network technicians

Today, network technicians have a broad selection of software troubleshooting tools at their disposal and whilst useful in certain situations and environments they do have limitations. NaviTEK NT on the other hand offers a comprehensive suite of test and troubleshooting functionality only found on dedicated hand-held testers:-

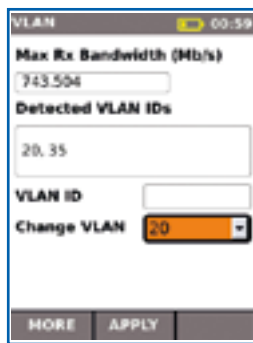
- Copper and fibre test interfaces
- Fast detection of link and IP information including duplex, speed, port ID, VLAN, DNS, DHCP, Gateway status and IP address
- Detects services such as ISDN, POTS and PoE
- Accurate wire mapping including length measurement and distance to fault
- Rugged, compact design permits use in confined spaces
- Not susceptible to virus and malware attack

### Port & network summary info



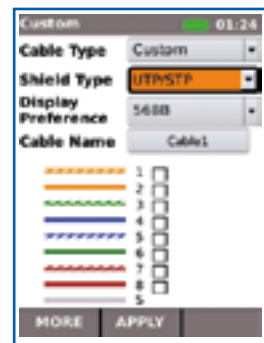
Press the Autotest button to display summary information and allow for detailed inspection of network parameters.

### VLAN detection & operation



Automatic detection of VLAN ID's allows the user to configure NaviTEK NT for operation on a VLAN.

### Custom Wiremap



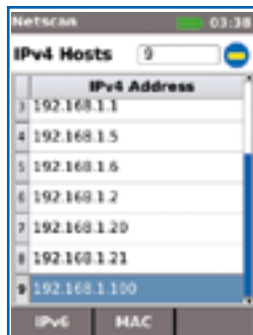
Use a list of wiremap templates for common Ethernet cable types as well as non-Ethernet cables, such as Profinet and ISDN.

### CDP/LLDP/EDP port information



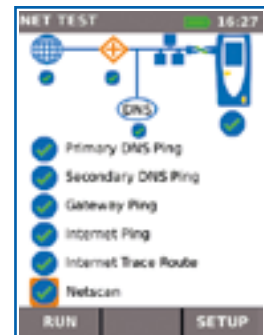
Show port information using Cisco Discovery Protocol (CDP), Link Layer Discovery Protocol (LLDP) and Extreme Discovery Protocol (EDP).

### Netscan



Display list of IP and MAC addresses of every device connected to the network.

### Network Probe



View network illustration to verify test results of each network component.

Send test reports from anywhere using the free app



**TREND**  
AnyWARE<sup>®</sup>  
APP



### Step 1 Test

- Create job folder
- Enter job site information
- Perform autotest on copper/fibre cabling and copper/fibre networks

### Step 2 Connect

- Activate NaviTEK NT wireless hotspot
- Connect your mobile phone or tablet with the TREND AnyWARE App
- Transfer test reports to your mobile device
- View test reports

### Step 3 Send

- Select reports (PDF or CSV) to send
- Select preferred transfer method – email, ftp, cloud storage etc.
- Send file
- Alternatively save test reports to USB key

Download the FREE App today



## NavITEK NT

Performs tests for copper cabling and networks, including:

- Display network configuration - IPv4 / IPv6 compatible
- Advanced wiremap for miswires, split pairs, opens and shorts
- Distance to opens and shorts (TDR)
- PoE/PoE+ detection
- Tone generator for cable tracing
- Autotest button performs Ping and Traceroute test (network mode)
- Hub blink for port identification
- DHCP client
- Switch detection - 10/100/1000 Mb/s
- User-exchangeable RJ45 inserts
- Support for up to 12 wiremap remotes
- Backlit colour screen

## NavITEK NT Plus

All the features of NavITEK NT as well as:

- Touchscreen
- Custom wiremap
- Autotest button performs a suite of network tests: Internet connectivity (Ping, DNS, Gateway, Traceroute) and NetScan
- Network Probe (NET TEST) provides detailed network information of each device
- Port identification using EDP/CDP/LLDP protocols
- VLAN detection and support
- Network scan (IP and MAC addresses of devices)
- PoE/PoE+ load test
- Traffic utilisation bar graph
- Internal memory for 5000 test reports
- Generate test reports (PDF or CSV)
- TREND AnyWARE mobile app

## NavITEK NT Pro

All of the features of NavITEK NT Plus as well as:

- Fibre optic cable interface
- Logon using the 802.1x protocol
- Optical power level and pass/fail indication with supported SFP
- Loopback mode for transmission testing on both copper and fibre interfaces

# NaviTEK NT

## Network Troubleshooter

### Test Reporting

NaviTEK NT automatically generates test reports in PDF or CSV format.

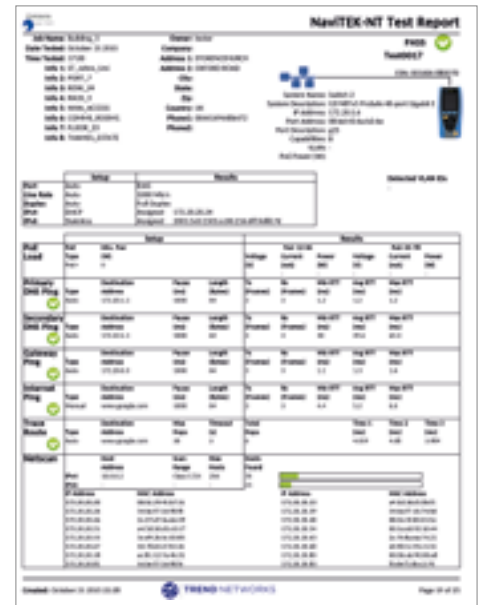
The summary page of each report can be customised to include logo, company and operator details. Choose between 3 different reports that can show either passed, failed or all test reports in each report:

- Summary
- Brief
- Full (see example on the right side)



### Ordering Information

| Part No.       | Kit Contents   |
|----------------|--|
| <b>R153001</b> | <b>NaviTEK NT - Network Troubleshooter.</b><br>1 x NaviTEK NT test unit, 1 x Remote unit No. 1, 4 x AA dry cell batteries (non-rechargeable), 2 x Patch cables - 30cm, Cat. 5e STP, 1 x Quick reference guide, 1 x Carry case  |
| <b>R151005</b> | <b>NaviTEK NT Plus- Network Troubleshooter.</b><br>1 x NaviTEK NT Plus test unit with touchscreen, 1 x Remote unit No. 1, 1 x Rechargeable Power Module, 1 x PSU EU/UK/US adapters, 2 x Patch cables - 30cm, Cat. 5e STP, 1 x USB Wi-Fi adapter, 1 x Quick reference guide, 1 x Carry case |
| <b>R151006</b> | <b>NaviTEK NT Pro - Network Troubleshooter.</b><br>1 x NaviTEK NT Pro test unit with touchscreen, 1 x Remote unit No. 1, 1 x Rechargeable Power Module, 1 x PSU EU/UK/US adapters, 2 x Patch cables - 30cm, Cat. 5e STP, 1 x USB Wi-Fi adapter, 1 x Quick reference guide, 1 x Carry case  |



### Optional Accessories

| Part No.       | Description   |
|----------------|---|
| <b>MGKSX1</b>  | 1 x 850nm SX MM SFP + fibre patch cord accessories kit                      |
| <b>MGK LX2</b> | 1 x 1310nm LX SM SFP + fibre patch cord accessories kit                     |
| <b>MGKZX3</b>  | 1 x 1550nm ZX SM SFP + fibre patch cord accessories kit                     |
| <b>150058</b>  | RJ-45 replacement kit - Pack of 10 replacement inserts with extraction tool |

For a full list of optional accessories, please visit our website.

### Basic Specifications

| Max. No. of Jobs | Max. No. of Stored Test | Max. Length   | Battery Life | Dimensions per handset in mm | Weight per handset |
|------------------|-------------------------|---------------|--------------|------------------------------|--------------------|
| 50               | 5000                    | 181 m/593 ft. | 5 hours      | 175 x 80 x 40                | 0.4 kg             |

For detailed specifications, please visit our website.



Dystrybutor:  
EMITER Sp. z o.o.  
ul. Porcelanowa 27  
40-043 Katowice  
tel. 32 730 34 00 e-mail:emiter@emiter.net.pl



Apple and the Apple logo are trademarks of Apple Inc., registered in the U.S. and other countries. App Store is a service mark of Apple Inc.

Android is a trademark of Google Inc.

All Rights Reserved. TREND, TREND NETWORKS, TREND AnyWARE and the NaviTEK logos are trademarks or registered trademarks of TREND NETWORKS.

TREND NETWORKS  
Stokenchurch House, Oxford Road, Stokenchurch,  
High Wycombe, Bucks, HP14 3SX, UK.

Tel. +44 (0)1925 428 380 | Fax. +44 (0)1925 428 381  
uksales@trend-networks.com

[www.trend-networks.com](http://www.trend-networks.com)



Specification subject to change without notice. E&OE

© TREND NETWORKS 2020  
Publications no: 151851, Rev. 3